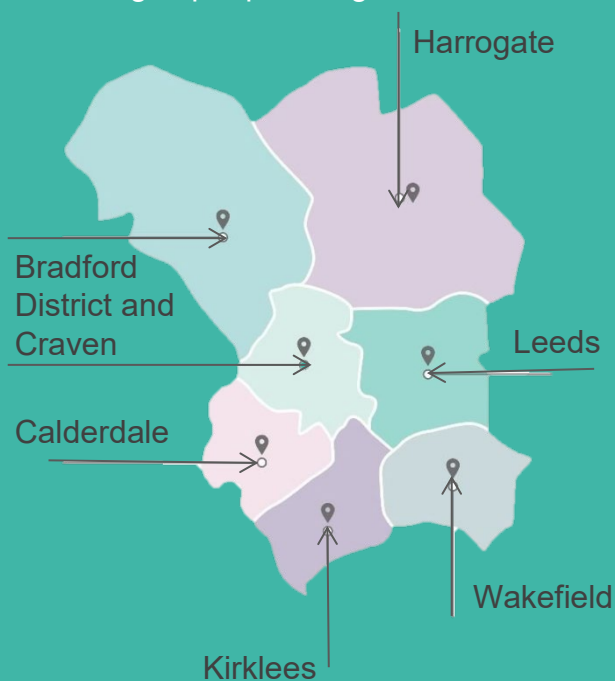


Telling our Partnership story



Proud to be the West Yorkshire and Harrogate Health and Care Partnership

Committed to improving the health and wellbeing of people living in:



- Working to improve people's health with and for them
- Improving people's experience of healthcare
- Making every penny in the pound count
- Working to keep people well and make life better for 2.6 million people living in West Yorkshire and Harrogate.

West Yorkshire and Harrogate Health and Care Partnership



Brain in Hand: Small Business Research Initiative Healthcare Award



Funded by NHS England & NHS Improvement, the £800,000 award is a recognition of Brain in Hand's revolutionary digital self-management approach to support services for autistic people, both pre- and post-diagnosis, and shows confidence in *Brain in Hand* as an effective solution in meeting the critical needs in autism services.

"This award will help us to continue to advance the product's capabilities, enhancing functionality, usability, and the overall experience to users and service providers. It will also fund clinical and health economic impact research enabling Brain in Hand to demonstrate the system's effectiveness as a solution to meeting critical needs in autism services."

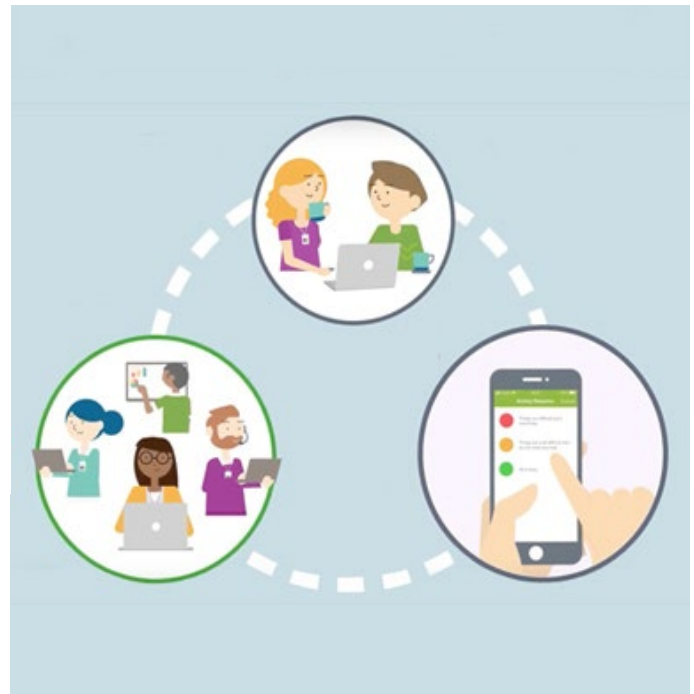
Brain in Hand in West Yorkshire and Harrogate

WY & H HCP secured NHSE funding for to deliver a place based pilot for support application 'Brain in hand' in 2019, the app has a 24 hour response service and is aimed at people living with mental health conditions and learning disabilities to receive personalized care and support to increase their level of knowledge, skills and confidence in managing their health and wellbeing. The app has been well received in other parts of the country. The pilot was adopted by a PCN in West Wakefield where training has been delivered to HCAs and nursing teams who deliver learning disability health checks within the PCN to identify suitable cohorts to trial the support app.

So far the PCN has successful secured referrals into the service where more than 8 people living with a learning disability will be trialing this app during 2020. Evaluation will be coproduced with people with lived experience and is based on levels of patient activation and case studies from participants.

What's Next

- Promotion of pilot scheme to obtain further sign up to app
- Evaluation method has now been approved and the programme will start to receive regular updates from the Brain in Hand team on reporting outcomes.



NHS Wakefield CCG
White Rose House
West Parade Wakefield
WF1 1LT

 westyorkshire.stp@nhs.net

 www.wyhpartnership.co.uk

 [@WYHpartnership](https://twitter.com/WYHpartnership)

 01924 317659

A partnership made up of the NHS, local councils, care providers, Healthwatch, community and carers organisations

December 2020

**West Yorkshire and Harrogate
Health and Care Partnership**

